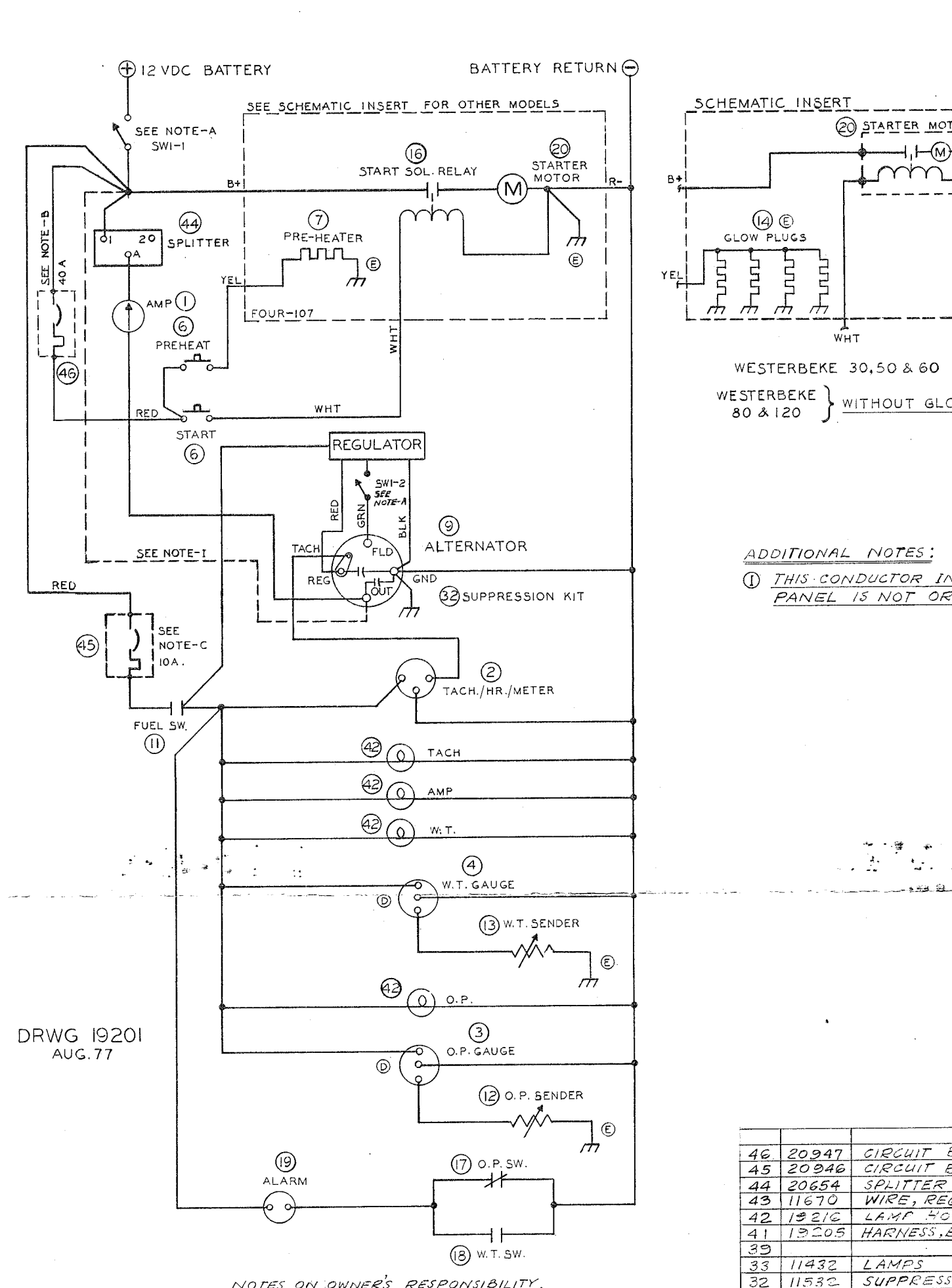
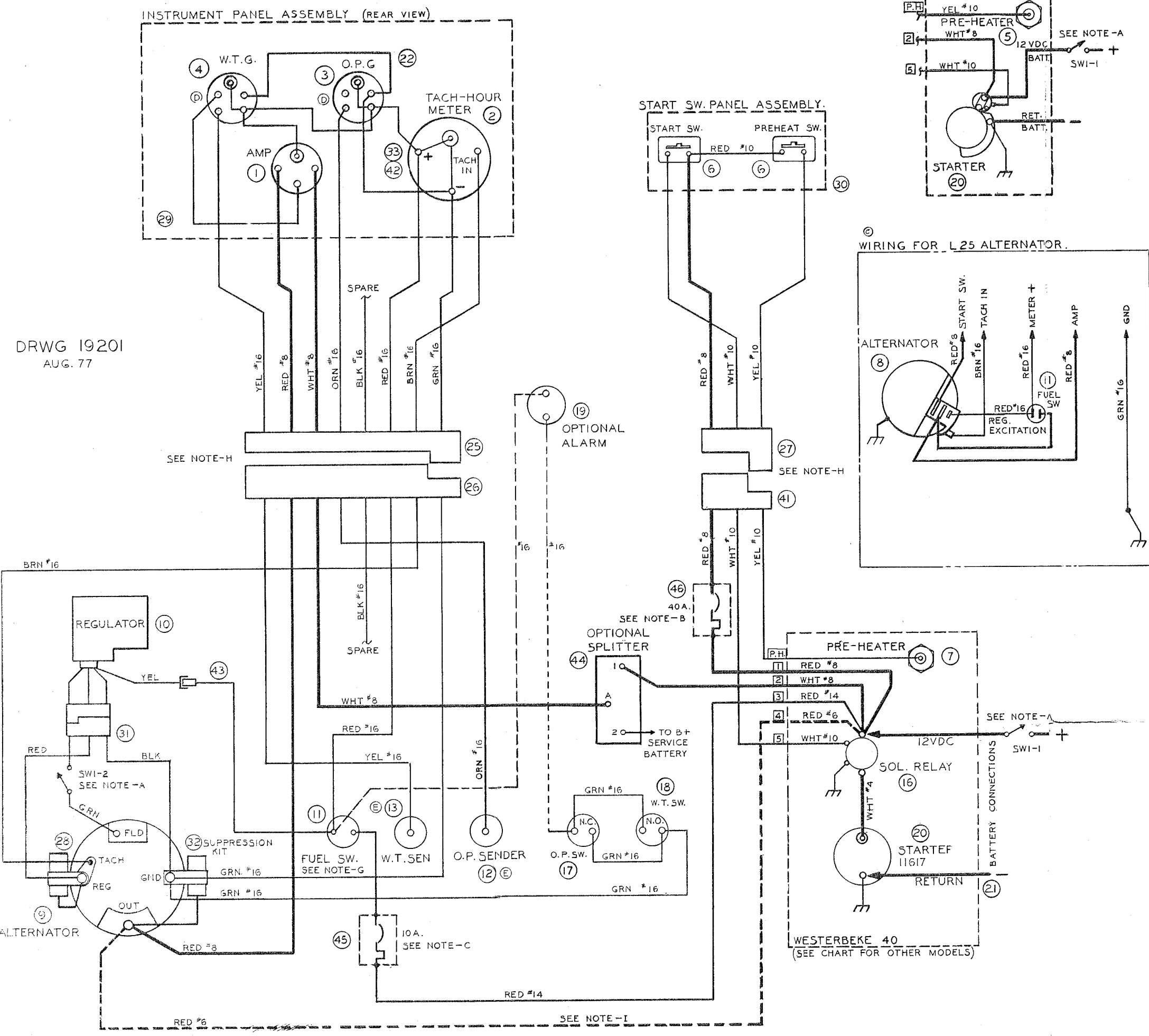


SYM.	DATE	DESCRIPTION
A	1975	ADDED INSERT WHEN I WAS 191
B	1976	ADDED I 1724 33
C	1976	ADDED I 1724 33
D	1977	ADDED I 1724 33

WIRING DIAGRAM.

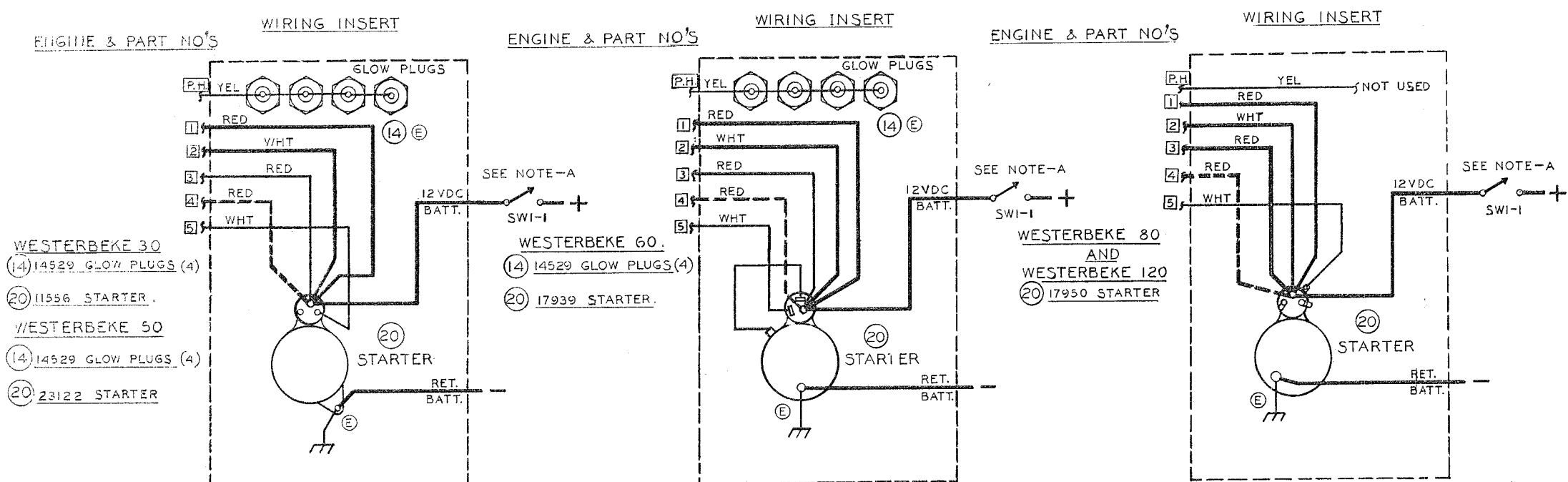
SCHEMATIC DIAGRAM.



DRWG 19201
AUG. 77

DRWG 19201
AUG. 77

CHART FOR STARTER MOTORS AND HEATERS.



ADDITIONAL NOTES:
① THIS CONDUCTOR INS. PANEL IS NOT ORD.

- NOTES ON OWNER'S RESPONSIBILITY.
- (A) AN ON-OFF SWITCH MUST BE INSTALLED IN THIS LINE TO DISCONNECT THE STARTER CIRCUIT FROM THE BATTERY IN AN EMERGENCY & WHEN LEAVING THE BOAT. 12VOLT DIESEL ENGINE STARTERS TYPICALLY DRAW 200 TO 300 AMPS WHEN CRANKING. THE DURATION OF INDIVIDUAL CRANKING CYCLES SHOULD NOT EXCEED 30 SECONDS. A SWITCH WITH CONTINUOUS RATING OF 175 AMPS AT 12VDC WILL NORMALLY SERVE THESE FUNCTIONS, BUT SUCH A SWITCH MUST NEVER BE USED TO "MAKE" THE STARTER CIRCUIT. ADDITIONALLY THE SWITCH MUST HAVE A SECOND POLE WITH A 5 AMP CONTINUOUS RATING TO SWITCH THE ALTERNATOR FIELD. WITHOUT THIS SECOND POLE DAMAGE WILL OCCUR TO THE ALTERNATOR IF THE SWITCH IS OPENED WHILE THE ENGINE IS RUNNING.
- (B) A 40 AMP FUSE OR BREAKER (SLO-BLOW PREFERRED) MUST BE INSTALLED IN THIS LINE.
- (C) A 10 AMP FUSE OR BREAKER (SLO-BLOW PREFERRED) MUST BE INSTALLED IN THIS LINE.
- OTHER NOTES (D) WARNING; SENDER CONNECTION: CONTACT WITH B+ MAY DAMAGE SENDER.
- (E) SENDER & HEATER RETURNS ARE THROUGH ENGINE BLOCK.
- (F) FOR WIRING OF AUXILIARY ALTERNATORS SEE THE FOLLOWING DIAGRAMS:
MOTOROLA 85 AMP, 11232
MOTOROLA 120 AMP, 11231
LEECE-NEVILLE 53 AMP, 16535
LEECE-NEVILLE 105 AMP, 16614
- (G) IF ADDITIONAL PRESSURE SWITCHES ARE REQ'D TO START BOAT ACCESSORIES, A FLEXIBLE HOSE MUST BE RUN FROM THE FUEL PRESSURE MANIFOLD TO A NEARBY BULKHEAD AND ALL PRESSURE SWITCHES MOUNTED AT THE BULKHEAD, INCLUDING THE FUEL SWITCH PRESSURE SWITCH SUPPLIED.
- (H) APPLY SILASTIC OR TIGHT WOUND PLASTIC ELECTRICAL TAPE AROUND CONNECTORS CONNECTED.

ITEM	PART NO.	DESCR.
46	20947	CIRCUIT BR.
45	20946	CIRCUIT BR.
44	20654	SPLITTER
43	11670	WIRE, REG.
42	19210	LAMP, SOL.
41	19205	HARNESSE, EN
39		
33	11432	LAMPS
32	11532	SUPPRESSION
31	11675	CABLE, AL.
30	19208	PANEL, STA.
29	12885	PANEL, LE
28	12959	TACH. KIT.
27	19206	CABLE, ST.
26	19209	HARNESSE, EN
25	19208	CABLE, INS.
24		
23		
22	19215	HARNESSE, L.
21	Not Suppl.	BATTERY CA
20	SEE CHART	MOTOR, STA.
19	13355	ALARM
18	13382	SWITCH, WAT
17	11552	SWITCH, OIL
16	11489	SOLENOID,
15		
14	SEE CHART	GLOW PLUG
13	11543	SENDER, WA
12	11542	SENDER, O
11	11383	SWITCH, FUEL
10	11550	REGULATOR
9	19270	ALTERNATOR
8	21386	ALTERNATOR
7	11530	PRE-HEATER
6	11957	SWITCH, PU
5		PRE-HEATE
4	11545	GAUGE, WA
3	11544	GAUGE, OIL
2	11917	TACHOMETER
1	11501	AMMETER

J.H.
W30,
80, 1
TITLE: M
FUEL P
DATE
8-27-